



Art Specifications

Help us help you! To keep your projects running smoothly, please provide the following:

QUESTIONS?

CONTACT US AT 330-448-2000 x4
FOR FURTHER ASSISTANCE.

- 1 The artwork in one of the file formats listed below.
- 2 A dimensioned engineering drawing showing artwork placement and fabrication information. [See page 2 for a drawing specification checklist.](#)

1 Electronic Artwork

Vector vs. Raster Artwork

A vector image is a digital graphic created using defined points, lines, and curves. This allows it to be scaled up or down without losing quality. Raster images are made up of pixels which degrade and become blurry when resized or enlarged. This makes vector art ideal for production, and your best option for a high quality product. If raster artwork is the only artwork available, providing a high resolution file (300 DPI) will also produce a high quality result.

File Formats

At Roemer, our graphics team uses the latest Adobe design products. **Acceptable artwork file formats include:** .ai, .eps, .pdf, .indd, .dxf, and .dwg. *Please note:* We work in a 2D environment. 3D file formats like .stp files are not optimal.

Variable Data Jobs

Our graphics team uses the latest Microsoft Office products for word processing and data handling. For jobs which require variable data, please provide the data in an Excel database. **Acceptable data file formats include:** .xlsx, .xls, and .csv. Please specify how the data will be expressed: text, barcode, Aztec code, QR code, or Data Matrix. If requesting barcodes, please specify what type (Code 39, Code 128, etc.). If requesting Data Matrix, please include the construct and format.

[See Page 2 for database example.](#)

2 Drawings

Electronic Drawings

The drawings should show artwork placement, critical measurements, dimensions, and fabrication information. Please be sure all submissions are legible. Remember, **if you can't read it, neither can we!** To ensure precise measurements, vector based drawings are optimal. We can work with raster based drawings as long as all information is clear and legible.

[See PAGE 2 for a Drawing Specification Checklist](#)

HELPFUL HINTS: COLOR

- Save all color images in CMYK color mode.
- Choose colors from the Pantone swatch books, rather than color combinations that look good on your monitor.
- Colors from a standard home/office printer do NOT represent the color that will be printed.
- For the most accurate color match, please send a physical sample of the printed material.

***Professional Color Matching is available
for jobs where color is critical.***

PLEASE NOTE:

In cases where significant file handling is required (i.e. extremely complex art, rebuilding databases, etc.) extra art charges may apply.

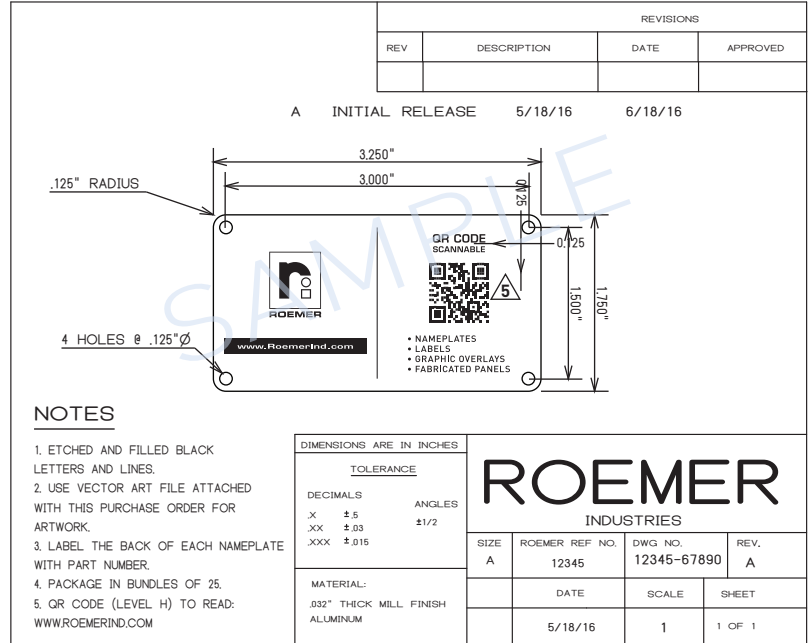


Drawing Specification Checklist

Please include all key details required to manufacture your exact part.
(Not all items listed below may apply.)

- ☐ Part size
- ☐ Material type and alloy
- ☐ Material thickness
- ☐ Process (Metalphoto®, etched, screen or digitally printed, etc.)
- ☐ Adhesive and overlamination type and thickness
- ☐ Radius corner size (if required)
- ☐ Hole size(s) and location(s)
- ☐ Colors (Stock or Pantone (PMS) colors available)
- ☐ Font specifications:
Min. text height .05" and min. stroke weight .007"
- ☐ Complete barcode, Datamatrix and QR Code information
See Database Example
- ☐ Tolerance, compliance and quality standards
- ☐ Special labeling or shipping requirements (If required, should be listed on P.O.)
- ☐ Environment and life expectancy (if applicable)

Drawing Sample



Database Example

*NUMBER OF COLUMNS OPTIONAL, DEPENDING ON HOW MANY FIELDS REQUIRE DATA ON PARTS.
*DATA IN EACH COLUMN OPTIONAL.
(CAN BE STATIC, CONSECUTIVE OR VARIABLE).

MICROSOFT EXCEL DATABASE

	A	B	C
	SERIAL #	PART #	BARCODE DATA
1	0001	ROEMER-14	https://roemerind.com
2	0002	ROEMER-15	https://roemerind.com
3	0003	ROEMER-16	https://roemerind.com
4	0004	ROEMER-17	https://roemerind.com
5	0005	ROEMER-18	https://roemerind.com
6	0006	ROEMER-19	https://roemerind.com
7	0007	ROEMER-20	https://roemerind.com
8	0008	ROEMER-21	https://roemerind.com
9	0009	ROEMER-22	https://roemerind.com
10	0010	ROEMER-23	https://roemerind.com

EACH COLUMN REPRESENTS A FIELD ON PART.
COLUMN A: SERIAL #, COLUMN B: PART #, COLUMN C: DATA FOR QR CODE.

SAMPLE PART

The sample part shows a label with the Roemer Industries logo and contact information. The label includes fields for SERIAL # and PART #, which are populated with data from the database. A QR code is also present, which would read the data from the database when scanned.

SERIAL #: 0001
PART #: ROEMER-14

RoemerInd.com

DATA APPLIED TO EACH FIELD FROM DATABASE.
QR CODE WOULD READ AS PRESENTED IN DATABASE WHEN SCANNED.

*APPEARANCE OF PART IS FOR REFERENCE ONLY.

